

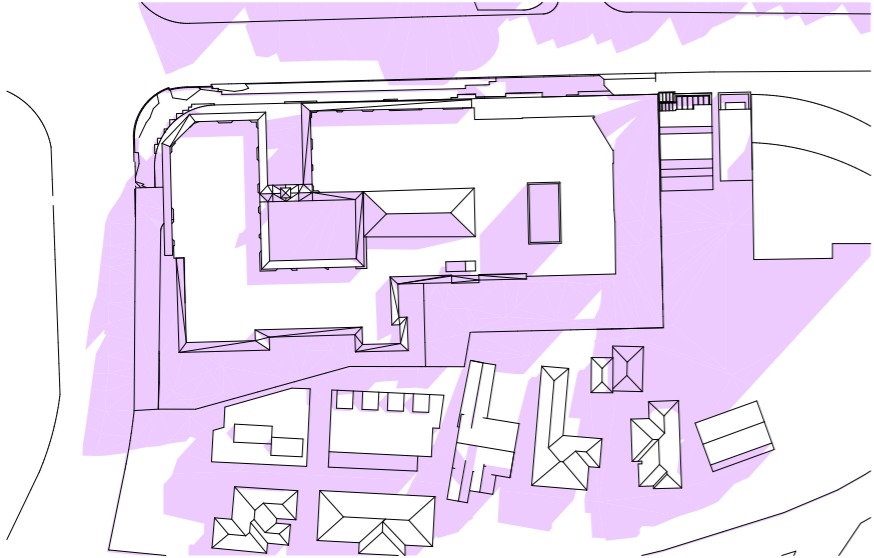
08:00am Existing



08:00am Potential Base Scheme



08:00am Proposed



09:00am Existing



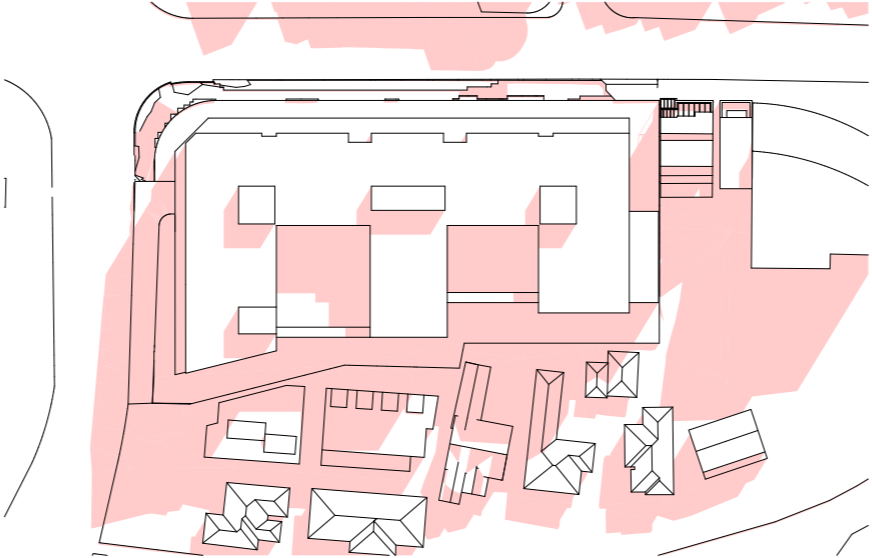
09:00am Potential Base Scheme



09:00am Proposed



10:00am Existing



10:00am Potential Base Scheme



10:00am Proposed

Solar Analysis
Shadow Diagrams -
June 21 - Sheet 1

- EXISTING SHADOWS
 - WLCS2036 BASE SCHEME (POTENTIAL)
 - PROPOSED SHADOWS
- SHADOWS TAKEN ON THE 21st JUNE

Planning Proposal Submission

The Quadrangle - Castlecrag
100 Edinburgh Road Castlecrag NSW 2068

Shadow Diagrams - June 21 - Sheet 1
Solar Analysis
NOTE: Drawings are for illustrative purposes only. The Design and layout are a reference scheme for planning proposal approvals only. Plans are subject to change at subsequent planning phases

Rev	Date	Description	By	Chk
09	27/8/21	Submission	DN	RFJ
08	18/8/21	For Information	DN	RFJ
07	3/7/21	Pre-PP Submission	DN	RFJ
06	2/7/21	For Information	DN	RFJ
05	22/6/21	For Information	DN	RFJ

Scale
1:400 @ A3

Code
GQC

Sheet
6201

Rev
09

0 4 10 20m





14:00pm Existing



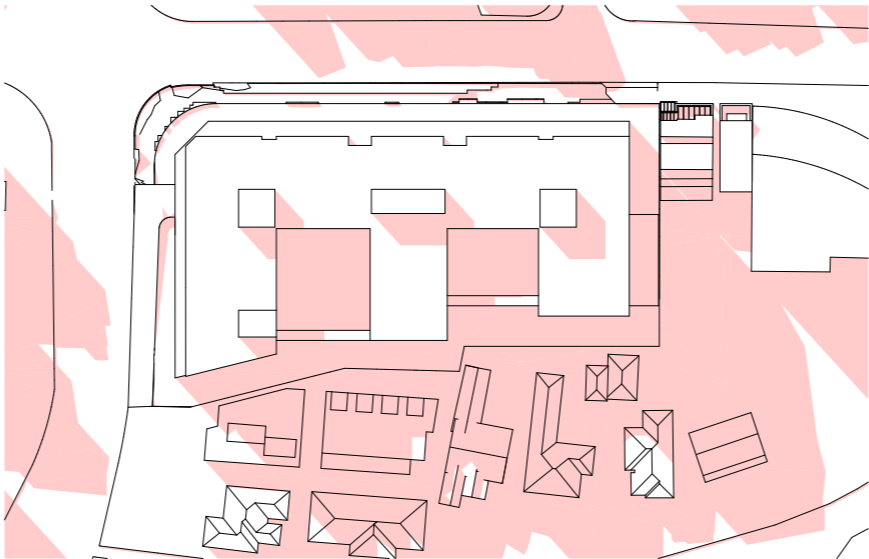
14:00pm Potential Base Scheme



14:00pm Proposed



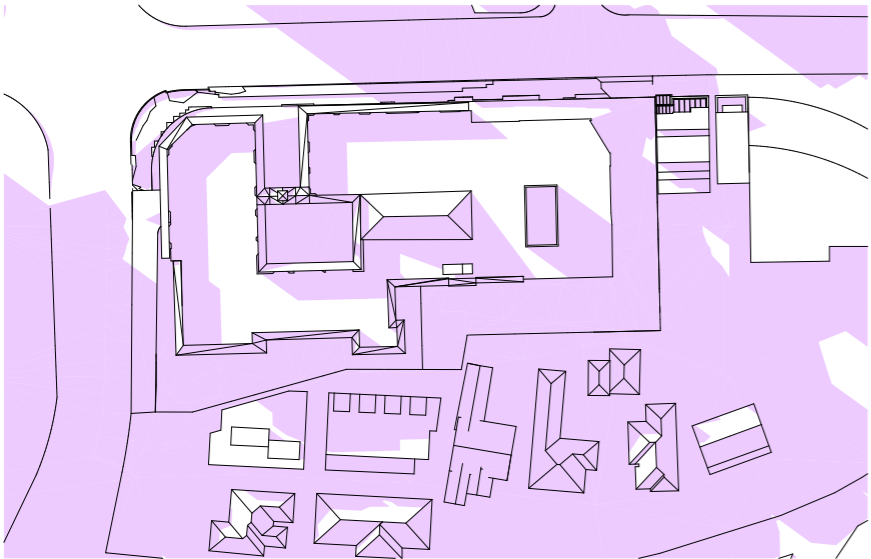
15:00pm Existing



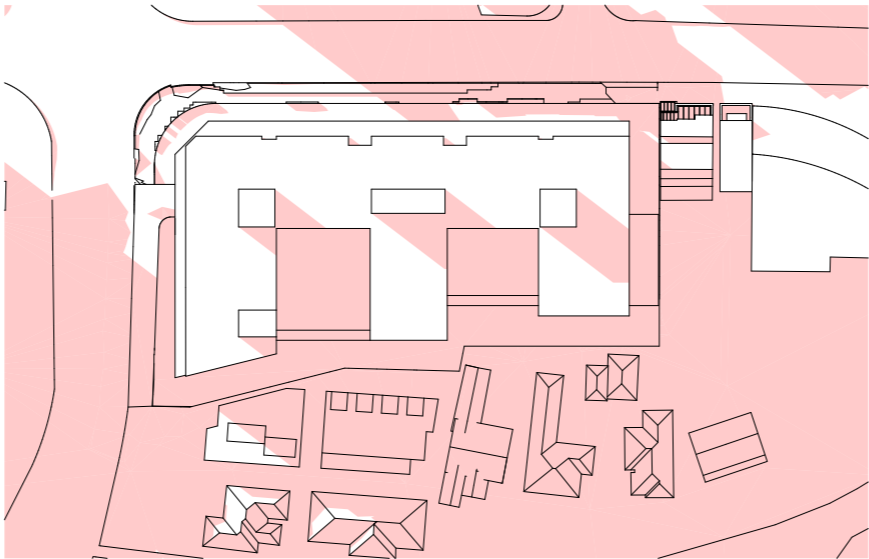
15:00pm Potential Base Scheme



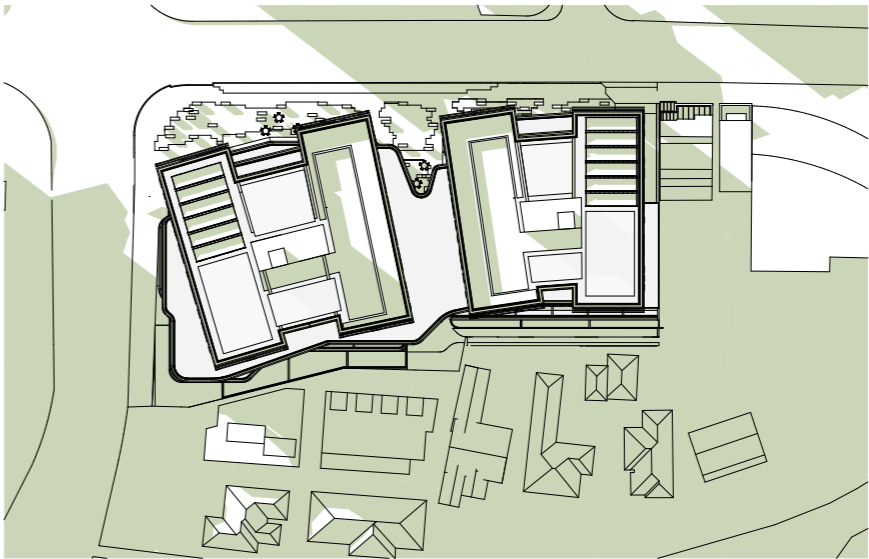
15:00pm Proposed



16:00pm Existing



16:00pm Potential Base Scheme



16:00pm Proposed

Solar Analysis
Shadow Diagrams -
June 21 - Sheet 3

- EXISTING SHADOWS
 - WLCS2036 BASE SCHEME (POTENTIAL)
 - PROPOSED SHADOWS
- SHADOWS TAKEN ON THE 21st JUNE

Planning Proposal Submission

The Quadrangle - Castlecrag
100 Edinburgh Road Castlecrag NSW 2068

Shadow Diagrams - June 21 - Sheet 3
Solar Analysis
NOTE: Drawings are for illustrative purposes only. The Design and layout are a reference scheme for planning proposal approvals only. Plans are subject to change at subsequent planning phases

Rev	Date	Description
04	27/8/21	Submission
03	18/8/21	For Information
02	3/7/21	Pre-PP Submission

By	Chk	Scale
DN	RFJ	1:400 @ A3
DN	RFJ	
DN	RFJ	

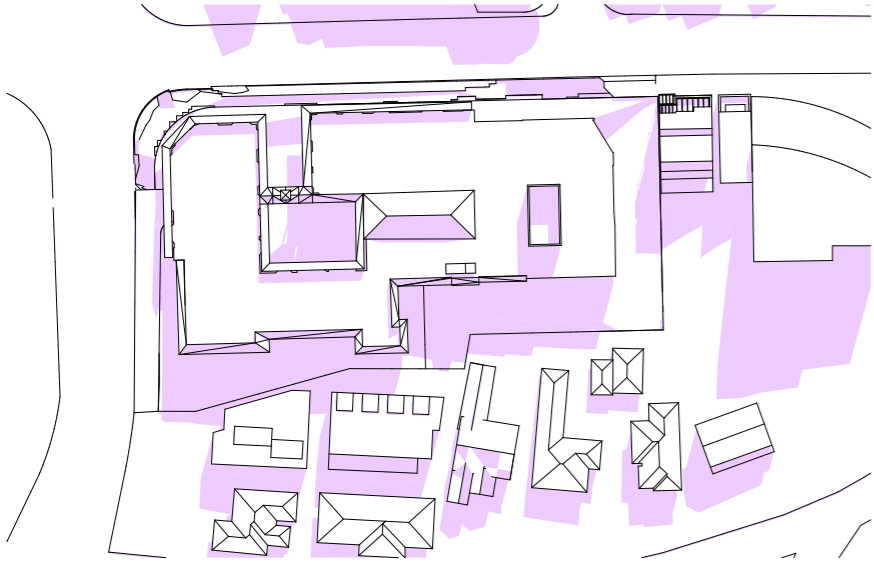
Code
GQC

Sheet
6203

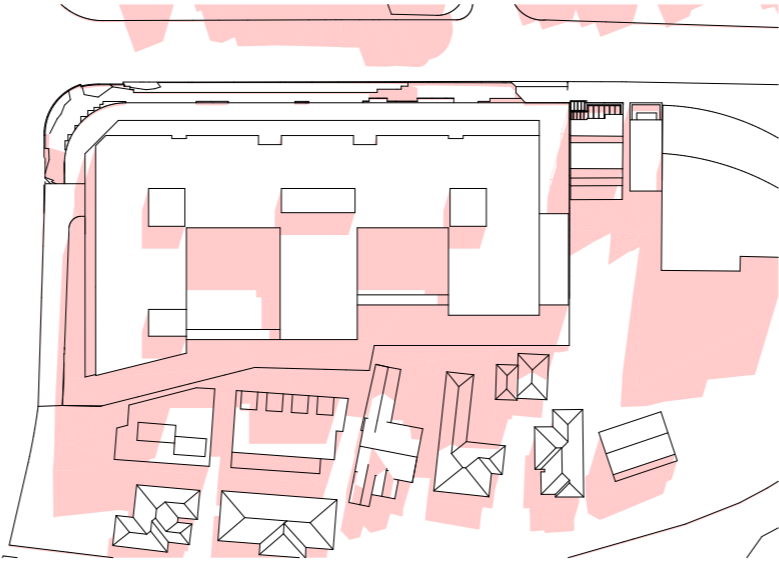
Rev
04

0 4 10 20m





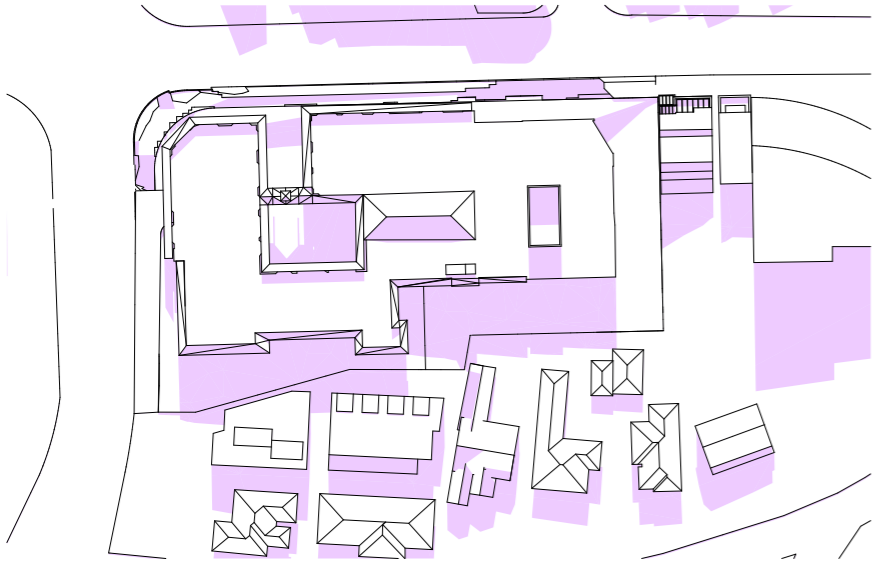
11:00am Existing



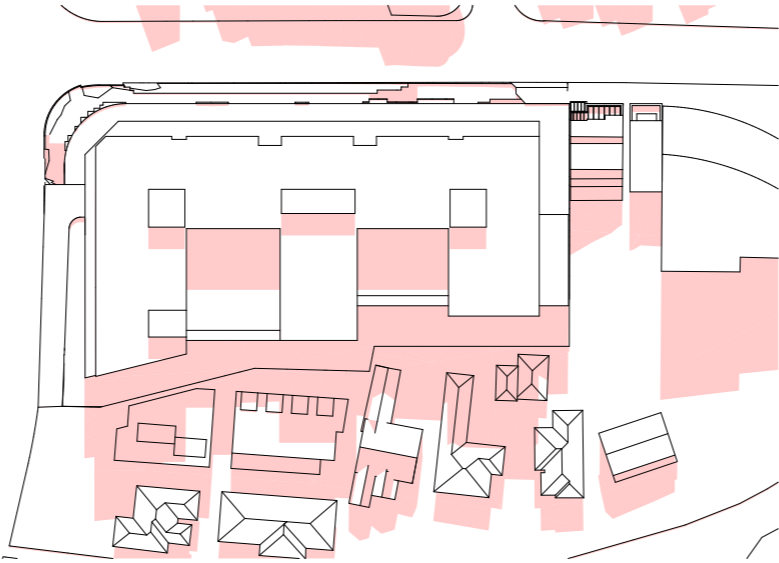
11:00am Potential Base Scheme



11:00am Proposed



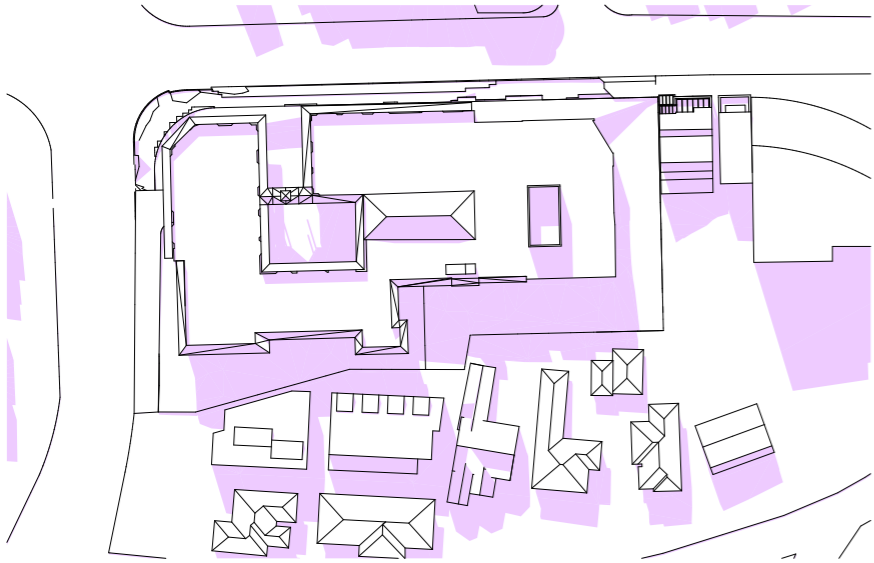
12:00pm Existing



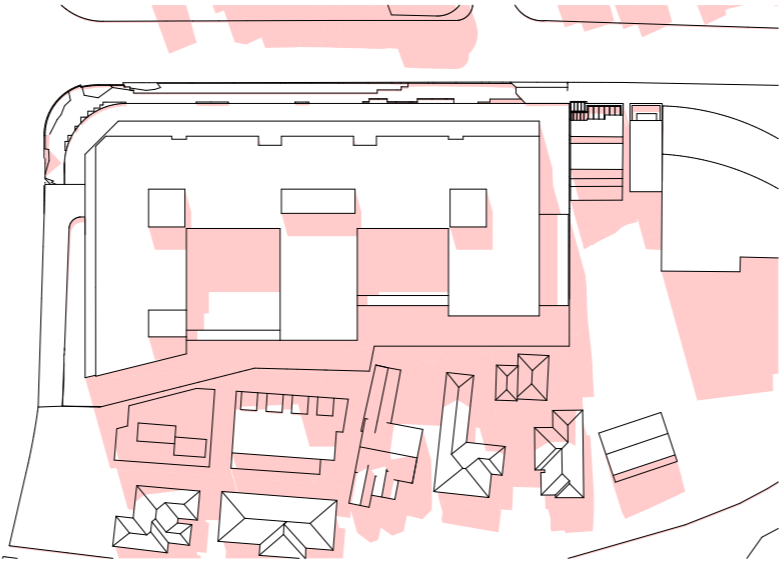
12:00pm Potential Base Scheme



12:00pm Proposed



13:00pm Existing



13:00pm Potential Base Scheme



13:00pm Proposed

Solar Analysis
Shadow Diagrams -
June 21 - Sheet 2

- EXISTING SHADOWS
 - WLCS2036 BASE SCHEME (POTENTIAL)
 - PROPOSED SHADOWS
- SHADOWS TAKEN ON THE 21st JUNE

Planning Proposal Submission

The Quadrangle - Castlecrag
100 Edinburgh Road Castlecrag NSW 2068

Shadow Diagrams - June 21 - Sheet 2
Solar Analysis
NOTE: Drawings are for illustrative purposes only. The Design and layout are a reference scheme for planning proposal approvals only. Plans are subject to change at subsequent planning phases

Rev	Date	Description	By	Chk
04	27/8/21	Submission	DN	RFJ
03	18/8/21	For Information	DN	RFJ
02	3/7/21	Pre-PP Submission	DN	RFJ

Scale
1:400 @ A3

Code
GQC

Sheet
6202

Rev
04

0 4 10 20m

